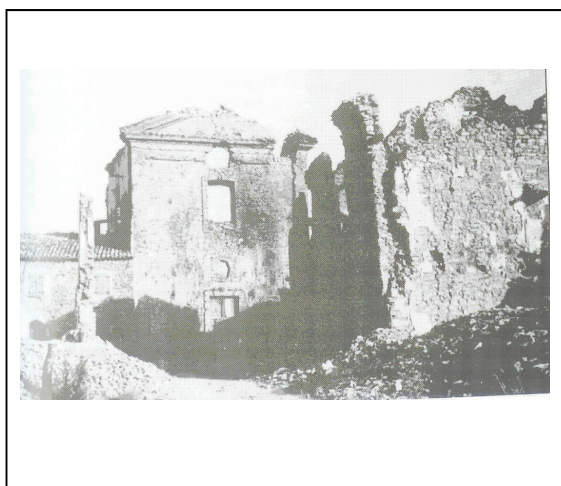


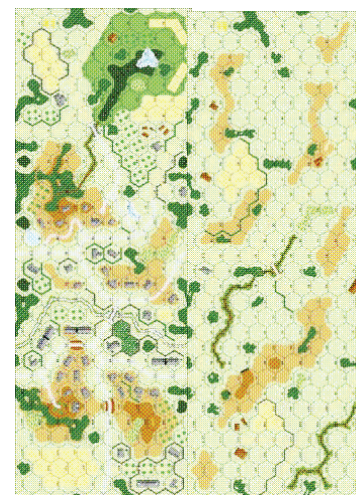
GEMMANO

The Adriatic's Cassino

OO #7



Gemmano, 12 September 1944 - After the failure of attacks on the line Gothic from 3 to 8 September, the British, have made account underestimated the German defenses, reorganize and then launch a new series of attacks. The central location of Gemmano, on the Gothic, would have allowed in the event of breakthrough, not only threaten behind the German defensive line, but what is more, to bottle without escape departments who were defending their coastline.



VICTORY CONDITIONS: the British wins if conquest 3 buildings on 2 hex from AA4 + buildings in S3 and S7 of map 41, and no take loss >= 25 VP. , or wins the German..

German set up first	1	2	3	4	5	6	7	8	9	End
British move first										

British :
Elements of the Company B, D 6° York Lancaster
 6 X 4-5-8
 2 X 4-5-7 2 LMG 1 Piat
 9-1 1 MMG
 8-1

Enter on first turn from north edge 41 map

Elements of the Company A, C 6° York Lancaster
 6 X 4-5-8
 4 X 4-5-7 LMG 1 Piat
 9-1 2 MMG 2 MTR 50
 8-0
 7-0

Enter on 2° turn from est hedge, heses A-P map 18

ELR 4; SAN 3

German:
Elements of the 100 Regg. , 5 Div. Mountain, LXXVI Pz. Corp.
 5 X 5-4-8
 8 X 4-6-8 1 LMG
 9-1 2 MMG
 8-1 1 HMG
 8-0

4 trincee, 8 ?.

Set up on map 41, south row K.

ELR 3; SAN 4

Balance:
 X German: reinforcements british enter on 3° turn
 X British: la SSR n.2 is not valid

Special Rules (SSR):

- 1- German can set up <= 3 MMC/SW/SCM hidden
- 2- german can fortified 1 building on level 0, 41 map.
- 3- the stream and the bridge, on 41 map, are not; they are open ground. The marsh and small lake on 41 map are woods.
- 4- set up markers vineyard in 41 DD2, DD3, BB4, R2, P2, O2, M6, L5, CC3. The orchard are oliwe growe.
- 5- EC are MUD

Aftermath: The 46th resumed the offensive with elements of 6° York and Lancaster; the Germans, hidden, waiting for the British called, and then they fire at face to face and engage in fierce hand-to-hand with heavy losses on both sides. With approximately 50% of losses, the British were forced to retreat.

Gemmano fall, a few days later, only thanks to maneuver enveloping Divisions of the Allied placed sides of this area.